

PLT M1501/PLT M1503

SmartMeter Powerline Tester

- **Measurement and testing of physical level of PLC communication**
- Designed for **G3-PLC, CENELEC-S FSK or PRIME** communication technology
- **1 phase** (PLT M1501) or **3 phase** (PLT M1503) operation
- **Spectral analysis in 20kHz-500kHz** (or 27MHz option) frequency bandwidth
- **Web browser** used for device operation
- **Offline PC-based SW** for recorded data analysis included
- **Roll-oscilloscope time analysis in 20kHz-500kHz** (or up to 27MHz option) frequency bandwidth (option)
- **Remote operation via Wi-Fi or LTE modem (option)** for remote control and measurements
- **Simple (button-less) on-site usage** (connect & go)
- **Solid manufacturing** and safe use in all demanding environments (**CAT IV** compliance for TS measurements)

PLT M1501/PLT M1503

This product represents **testing equipment in the form of a spectrum analyzer** enabling the observation of physical level of PLC communication such as levels of PLC frequency carriers, disturbances, noise or other unwanted frequency harmonics, within frequency bandwidth from 20kHz to 500kHz (or up to 27MHz option). It solves the measurement part within PLC network cleanup giving a direct insight into the quality of PLC signals on AC line.

Technical data

- Designed for **G3-PLC, CENELEC-S FSK** or **PRIME** communication technology
- **1 phase** (PLT M1501) or **3 phase** (PLT M1503) device available
- **A web browser** used for data monitoring and data logging operations **on a PC or mobile device**
- **PC-based "Offline PLT Viewer" SW** for analyzing recorded data is included with the device
- **Time based roll-oscilloscope signal analysis** available for much easier immediate transmit/receive PLC signal recognition
- **Data logging** made inside the device or at the server side either **on-demand or based on a timer**
- **Data logs** done in csv or **animated gif format at configurable time intervals**
- **Remote operation** via LTE modem (option) enabling operation from the office

Power

- 230V AC LINE input voltage, micro-USB power supply included
- Rechargeable Li-Ion battery inside
- Over 4h standalone battery operation

Communication

- WiFi operating in access point mode
- LTE USB modem option enabling remote device access via self established VPN connection (modem can be provided)
- Ethernet TCP/IP connection enabling out-of-the-box VPN remote access

Enclosure

- Used for specific outdoor and high voltage environment
- Solid construction and design with ABS plastic enclosure in rubber casing

PLT M1501

(One phase instrument)



PLT M1503

(Three phase instrument)

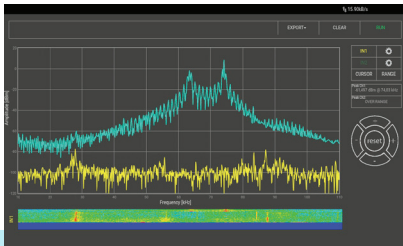


Interface

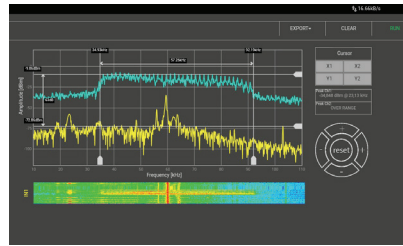
- USB port (USB OTG)
- Ethernet 1Gb/s

Standard compliance

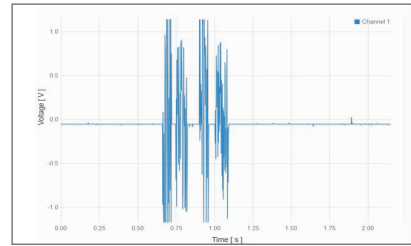
- CATIV 300V
- EN61010



PLC S-FSK measurement



PLC G3 measurement



Time domain PLC signal analysis

Solving remote meter reading issues in AMI systems